

Human IL-17F Protein; hFc Tag

Product Information

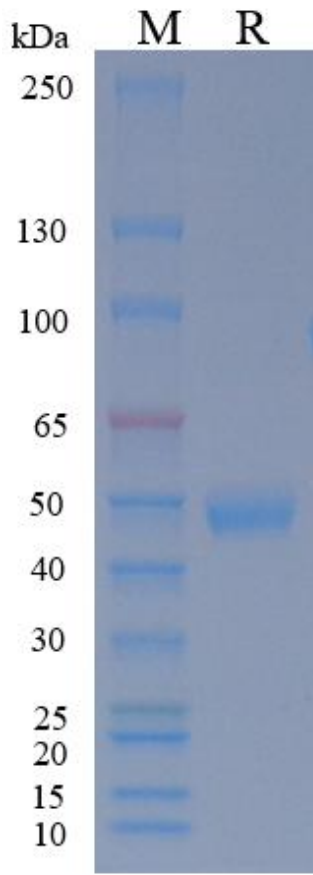
Product Name	Human IL-17F Protein; hFc Tag
Storage temp	Store at $\leq -70^{\circ}\text{C}$, stable for 6 months after receipt. Recommend to aliquot the protein into smaller quantities for optimal storage. Please minimize freeze-thaw cycles.
Catalog# / Size	GM-88665RP-100 / 100 μg GM-88665RP-1000 / 1 mg

Protein Information

Alternative Names	Interleukin-17F, Cytokine ML-1
Source	Human IL-17F Protein; hFc Tag (GM-88665RP) is expressed from human 293 cells (HEK-293). It contains AA Arg 31 - Gln 163 (Accession # Q96PD4-1). This protein carries a hFc tag at the N-terminus.
Purity	> 95% as determined by SDS-PAGE
Endotoxin	< 1 EU/ μg , determined by LAL gel clotting assay
Predicted Mol Mass	41.7 kDa
Formulation	Supplied as a 0.2 μm filtered solution of PBS, pH7.2-7.4.
Description	<p>IL-17F protein, full name Interleukin-17F, is an important cytokine and a member of the interleukin-17 family. IL-17F protein plays a crucial role in regulating immune responses, host defense against bacterial and fungal infections, and maintenance of mucosal barrier integrity in normal physiological conditions.</p> <p>In pathological conditions, overexpression or dysregulation of IL-17F can promote the recruitment of neutrophils, induce the production of pro-inflammatory cytokines (such as IL-6, TNF-α, and IL-1β), and enhance inflammatory responses, thereby contributing to chronic inflammation, tissue damage, and disease progression.</p> <p>Currently, several IL-17F-targeted therapeutic strategies have been developed or are under clinical investigation. These include neutralizing antibodies such as Bimekizumab, which simultaneously blocks both IL-17F and IL-17A, showing superior efficacy in treating psoriasis and psoriatic arthritis. These agents can alleviate inflammation and reduce tissue damage by inhibiting IL-17F-mediated signaling pathway activation, thereby improving patient symptoms and quality of life.</p> <p>In summary, IL-17F protein plays a critical role in the development and progression of inflammatory and autoimmune diseases, and is of great significance for understanding disease pathogenesis, selecting targeted therapeutic strategies, and evaluating patient prognosis.</p>

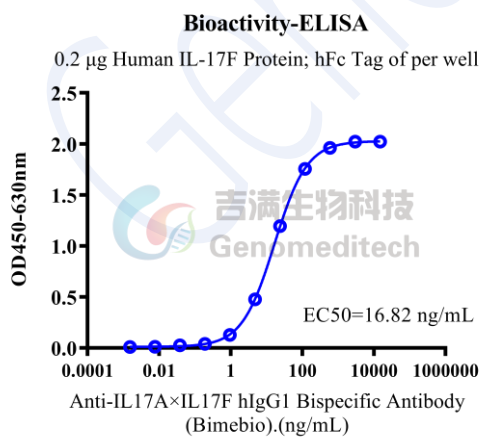
Version:4.0

SDS-PAGE



On SDS-PAGE under reducing (R) condition. The gel was stained overnight with Coomassie Blue. The purity of the protein is greater than 95%.

Bioactivity-ELISA



Human IL-17F Protein; hFc Tag (Catalog # GM-88665RP) was immobilized at 2 $\mu\text{g}/\text{ml}$ (100 $\mu\text{L}/\text{well}$). Increasing concentrations of Anti-IL17A x IL17F hIgG1 Bispecific Antibody(Bimebio) (Catalog # GM-88252MAB) were added.