

# Human EGFR Protein; hFc Tag

## Product Information

**Product Name** Human EGFR Protein; hFc Tag

**Storage temp** Store at  $\leq -70^{\circ}\text{C}$ , stable for 6 months after receipt.  
Recommend to aliquot the protein into smaller quantities for optimal storage. Please minimize freeze-thaw cycles.

**Catalog# / Size** GM-87563RP-100 / 100  $\mu\text{g}$   
GM-87563RP-1000 / 1 mg

## Protein Information

**Alternative Names** EGFR, ERBB, ERBB1, HER1, PIG61, mENA

**Source** Human EGFR Protein; hFc Tag (GM-87563RP) is expressed from human 293 cells (HEK-293). It contains AA Leu 25 - Ser 645 (Accession # P00533-1).  
This protein carries a hFc tag at the C-terminus.

**Purity** > 95% as determined by SDS-PAGE

**Endotoxin** < 1 EU/ $\mu\text{g}$ , determined by LAL gel clotting assay

**Predicted Mol Mass** 94.5 KDa

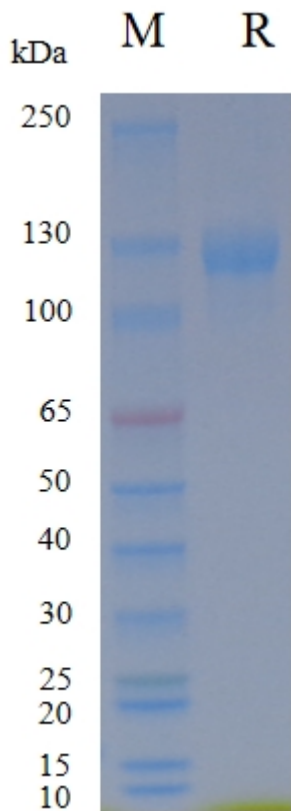
**Formulation** Supplied as a 0.2  $\mu\text{m}$  filtered solution of PBS, pH7.2-7.4.

**Description** EGFR (Epidermal Growth Factor Receptor) protein is a receptor tyrosine kinase (RTK), belonging to the tyrosine kinase receptor family. EGFR is widely expressed in various cell types, including epithelial cells, nerve cells, and muscle cells. Activation of EGFR typically occurs through binding to its ligand (such as EGF), triggering its autophosphorylation and activating its tyrosine kinase activity. Activated EGFR then initiates a series of signaling pathways, including Ras-MAPK, PI3K-Akt, among others, thereby influencing cell physiological functions.

EGFR plays a significant role in many types of cancers because abnormal EGFR signaling pathways can lead to excessive cell proliferation and malignant transformation. Therefore, EGFR has become one of the important targets for cancer treatment, with anti-cancer drugs targeting EGFR, such as EGFR inhibitors, being widely researched and applied in clinical therapy. EGFR holds importance in cell biology and cancer research, playing a crucial role in understanding cell signaling and cancer development mechanisms.

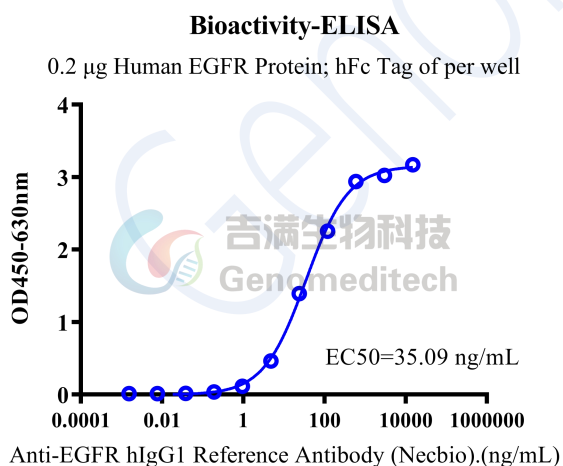
Version:4.0

## SDS-PAGE

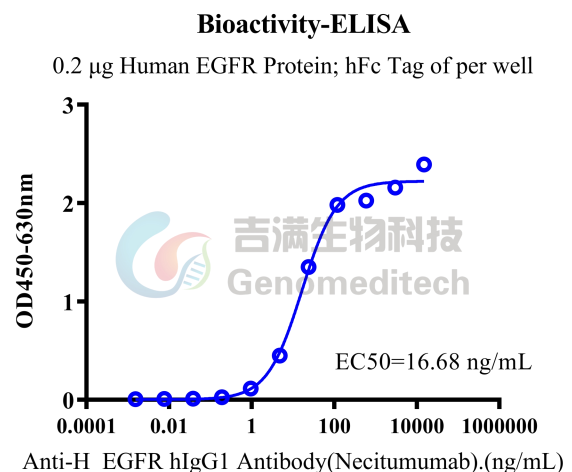


On SDS-PAGE under reducing (R) condition. The gel was stained overnight with Coomassie Blue. The purity of the protein is greater than 95%.

## Bioactivity-ELISA



Human EGFR Protein; hFc Tag (Catalog # GM-87563RP) was immobilized at 2  $\mu$ g/ml (100  $\mu$ L/well). Increasing concentrations of Anti-EGFR hIgG1 Reference Antibody (Necbio) (Catalog # GM-87808MAB) were added.

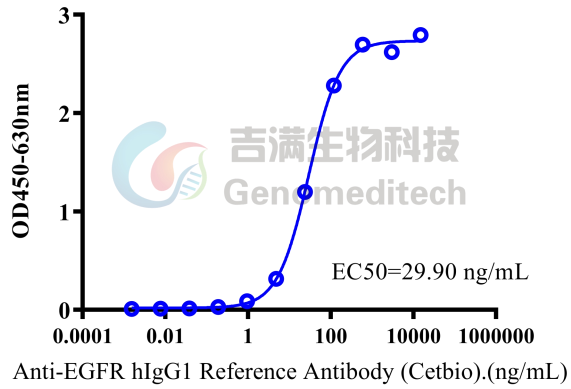


Human EGFR Protein; hFc Tag (Catalog # GM-87563RP) was immobilized at 2  $\mu$ g/ml (100  $\mu$ L/well). Increasing concentrations of Anti-H\_EGFR hIgG1 Antibody (Necitumumab) (Catalog # GM-49155AB) were added.

Version:4.0

### Bioactivity-ELISA

0.2  $\mu$ g Human EGFR Protein; hFc Tag of per well



Human EGFR Protein; hFc Tag (Catalog # GM-87563RP) was immobilized at 2  $\mu$ g/ml (100  $\mu$ L/well). Increasing concentrations of Anti-EGFR hIgG1 Reference Antibody (Cetbio) (Catalog # GM-87800MAB) were added.