

Anti-MUC1 hIgG1 Antibody(3D1)

Product information

GM-88514AB-10	10 µg
GM-88514AB-100	100 µg
GM-88514AB-1000	1 mg

Antibody Information

Species Reactivity	Human
Clone	3D1
Source/Isotype	Human IgG1, Kappa
Application	Flow Cytometry
Target	Detects MUC1
Gene	MUC1
Other Names	Mucin 1, CD227, EMA, H23AG
Gene ID	4582 (Human)
Background	<p>The research value of MUC1 stems from its role as a tumor-associated antigen aberrantly overexpressed and hypoglycosylated across a broad spectrum of epithelial cancers, including breast, lung, pancreatic, and ovarian malignancies. As a transmembrane glycoprotein that activates oncogenic pathways and promotes immune suppression by upregulating PD-L1 expression, MUC1 represents an ideal pan-cancer target with limited expression in normal tissues.</p> <p>Targeting MUC1 via diverse modalities-monoclonal antibodies, antibody-drug conjugates, bispecific NK cell engagers, CAR-T/NK cell therapies, and glycopeptide vaccines-offers a versatile therapeutic platform. Recent clinical advances, including promising phase I/II data for MUC1-targeted ADCs and dual-targeted CAR-NK strategies in solid tumors, underscore the transformative potential of anti-MUC1 interventions in reshaping the landscape of precision oncology.</p>
Storage	Store at 2-8°C short term (1-2 weeks).Store at ≤ -20°C long term. Avoid repeated freeze-thaw.
Formulation	Supplied as a 0.2 µm filtered solution of PBS, pH7.2-7.4.
Endotoxin	< 1 EU/mg, determined by LAL gel clotting assay

Data Examples

Flow Cytometry

H_MUC1-C(Flag-p62-p58-heterodimer) CHO-K1 Cell Line (Catalog # GM-C44931) was stained with Anti-MUC1 hlgG1 Antibody(3D1) (Catalog # GM-88514AB) or isotype control antibody, followed by anti-Human IgG APC-conjugated Secondary Antibody.

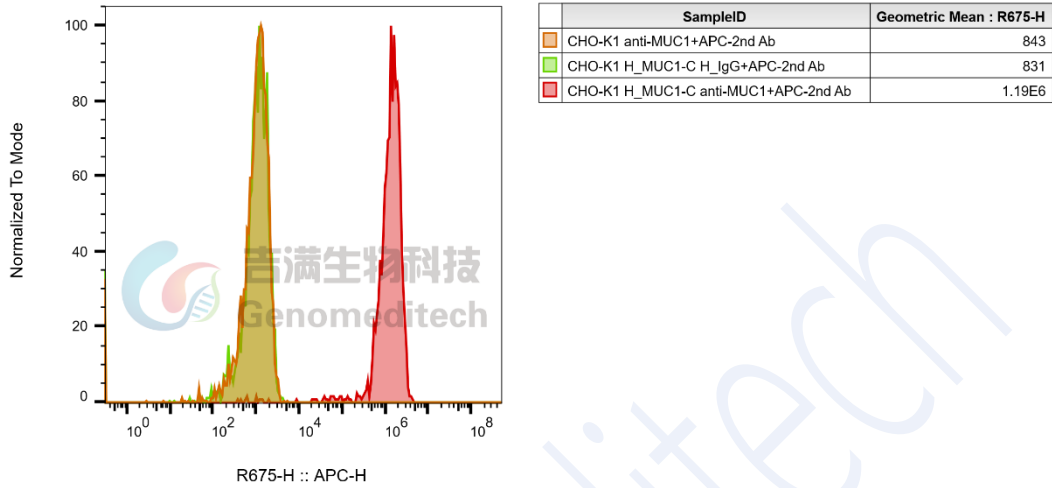


Fig. FACS