

Anti-STEAP1 hIgG1 Antibody(Xmab-A2(N67Q))

Product information

GM-88416AB-10	10 µg
GM-88416AB-100	100 µg
GM-88416AB-1000	1 mg

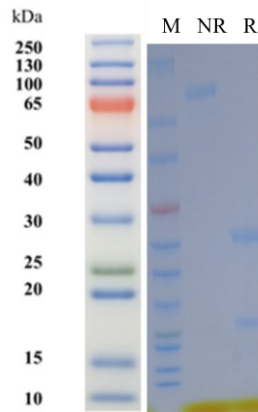
Antibody Information

Species Reactivity	Human
Clone	Xmab-A2(N67Q)
Source/Isotype	Human IgG1, Kappa
Application	/
Specificity	Detects STEAP1
Gene	STEAP1
Other Names	PRSS24, STEAP
Gene ID	26872 (human)
Background	<p>The STEAP1 gene encodes a six-step transmembrane protein belonging to the prostate transmembrane epithelial antigen family, which was originally identified in prostate cancer. This gene is located on the short arm of human chromosome 7, and its product consists of 339 amino acids with unique structural features: it lacks the n-terminal NADPH oxidoreductase domain, but contains a heme cofactor at the c-terminal. STEAP1 is highly expressed in prostate cancer, bladder cancer, lung cancer and other solid tumors, especially in metastatic tumors, while the expression is low in normal tissues, this makes it an ideal target for tumor diagnosis and treatment. At present, antibody drug conjugates and CAR-T cell therapy targeting STEAP1 are under development, showing good anti-tumor potential.</p>
Storage	Store at 2-8°C short term (1-2 weeks).Store at ≤ -20°C long term. Avoid repeated freeze-thaw.
Formulation	Supplied as a 0.2 µm filtered solution of PBS, pH7.2-7.4.
Endotoxin	< 1 EU/mg, determined by LAL gel clotting assay

Version:3.1

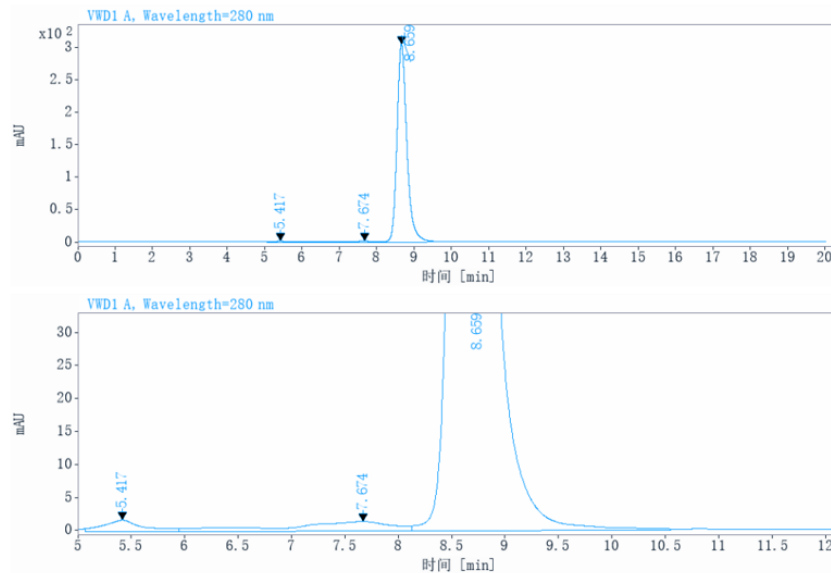
Data Examples

SDS-PAGE



On SDS-PAGE under reducing (R)/non-reducing(N-R) condition. The gel was stained overnight with Coomassie Blue. The purity of the protein is greater than 95%.

SEC-HPLC



The purity of this product is more than 90% verified by SEC-HPLC.