

Anti-SCF248 hlgG4 Antibody(5H10)

Product information

GM-88456AB-10	10 µg
GM-88456AB-100	100 µg
GM-88456AB-1000	1 mg

Antibody Information

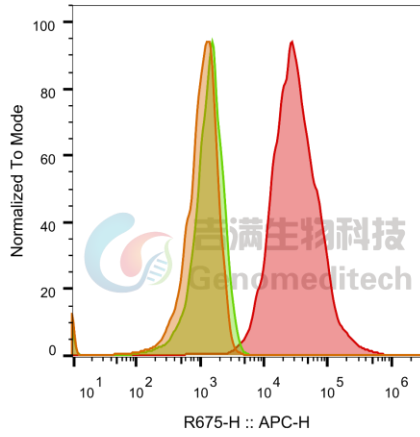
Species Reactivity	Human
Clone	5H10
Source/Isotype	Human IgG4 (S228P, L235E), Kappa
Application	Flow Cytometry
Specificity	Detects SCF248
Gene	SCF248
Other Names	KITLG
Gene ID	4254 (human)
Background	<p>The SCF248 gene encodes a soluble form of human Stem Cell Factor (SCF), also known as the soluble form of SCF, SCF248, or Steel Factor, it is processed into a mature soluble protein of 165 amino acids by specific protein cleavage sites. As a key ligand of the kinase receptor c-Kit, SCF248 is widely involved in the regulation of cell proliferation, differentiation, migration and survival by activating MAPK, PI3K and JAK-STAT signaling pathways, in the development of hematopoietic system, it cooperates with IL-3 and G-CSF to promote the generation of hematopoietic progenitor cells, myeloid and lymphoid cells. The embryonic period is essential for the formation of germ cells, melanocytes and nerve cells, in adults, mast cells maintain their survival and regulate their functions, and participate in tissue repair and fibrosis. Its membrane-bound counterpart SCF220 is produced by alternative splicing, and the regulation of the balance between the two provides a new perspective for understanding SCF biological functions and disease intervention strategies.</p>
Storage	Store at 2-8°C short term (1-2 weeks).Store at ≤ -20°C long term. Avoid repeated freeze-thaw.
Formulation	Supplied as a 0.2 µm filtered solution of PBS, pH7.2-7.4.
Endotoxin	< 1 EU/mg, determined by LAL gel clotting assay

Version:3.1

Data Examples

Flow Cytometry

H_KITLG(SCF248) CHO-K1 Cell Line (Catalog # GM-C44185) was stained with Anti-SCF248 hlgG4 Antibody(5H10) (Catalog # GM-88456AB) or isotype control antibody, followed by anti-Human IgG APC-conjugated Secondary Antibody.



SampleID	Geometric Mean : R675-H
CHO-K1 anti-SCF248+APC-2nd Ab	981
CHO-K1 H_KITLG(SCF248) H_IgG+APC-2nd Ab	1251
CHO-K1 H_KITLG(SCF248) anti-SCF248+APC-2nd Ab	30146

Fig. FACS