

Mouse LRRC15 Protein; His Tag

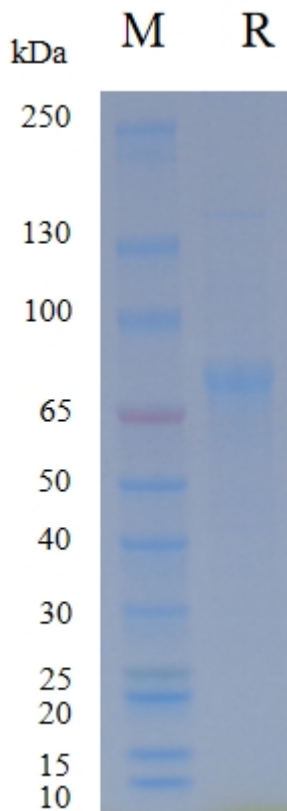
Product Information

Product Name	Mouse LRRC15 Protein; His Tag
Storage temp	Store at $\leq -70^{\circ}\text{C}$, stable for 6 months after receipt. Recommend to aliquot the protein into smaller quantities for optimal storage. Please minimize freeze-thaw cycles.
Catalog# / Size	GM-88584RP-100 / 100 μg GM-88584RP-1000 / 1 mg

Protein Information

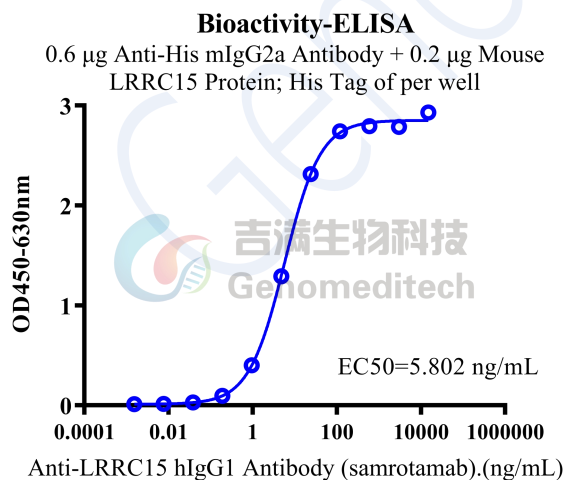
Alternative Names	Leucine-rich repeat-containing protein 15, LRRC15, LIB, hLib
Source	Mouse LRRC15 Protein; His Tag (GM-88584RP) is expressed from human 293 cells (HEK-293). It contains AA Tyr 22 - Gly 536 (Accession # Q80X72-1). This protein carries a his tag at the C-terminus.
Purity	> 95% as determined by SDS-PAGE
Endotoxin	< 1 EU/ μg , determined by LAL gel clotting assay
Predicted Mol Mass	58.3 KDa
Formulation	Supplied as a 0.2 μm filtered solution of PBS, pH7.2-7.4.
Description	LRRC15 protein, short for Leucine-Rich Repeat Containing 15, is a type I transmembrane glycoprotein belonging to the leucine-rich repeat (LRR) superfamily. It is mainly expressed on activated fibroblasts, particularly cancer-associated fibroblasts (CAFs), as well as on certain mesenchymal cells and subsets of tumor cells. LRRC15 is implicated in processes such as cell adhesion, migration, extracellular matrix remodeling, and modulation of the tumor microenvironment. In many solid tumors, including breast cancer, pancreatic cancer, sarcomas, and others, LRRC15 is upregulated in the stromal compartment and sometimes on tumor cells, while its expression in most normal adult tissues is relatively limited. Because of this tumor-restricted expression pattern and its role in shaping the tumor microenvironment, LRRC15 has emerged as a promising target for antibody-drug conjugates and other targeted therapies, and is being actively investigated in cancer research and drug development.

SDS-PAGE



On SDS-PAGE under reducing (R) condition. The gel was stained overnight with Coomassie Blue. The purity of the protein is greater than 95%.

Bioactivity-ELISA



Mouse LRRRC15 Protein; His Tag (Catalog # GM-88584RP) was immobilized at 2 μ g/ml (100 μ L/well). Increasing concentrations of Anti-LRRRC15 hIgG1 Antibody (samrotamab) (Catalog #GM-88586AB) were added.