

# Anti-STEAP1 hIgG1 Antibody(Xmab-A1)

## Product information

GM-88415AB-10	10 µg
GM-88415AB-100	100 µg
GM-88415AB-1000	1 mg

## Antibody Information

Species Reactivity	Mouse
Clone	Xmab-A1
Source/Isotype	Human IgG1, Kappa
Application	Flow Cytometry
Target	Detects STEAP1
Gene	STEAP1
Other Names	STEAP1, PRSS24, STEAP
Gene ID	26872 (Mouse)
Background	<p>STEAP1 is a cell surface protein highly expressed in most of prostate cancers, and its expression remains elevated even after progression to castration-resistant prostate cancer, while being almost absent in normal tissues, demonstrating excellent tumor specificity. Subsequent studies have also found its overexpression beyond prostate cancer, including in breast cancer, gastric cancer, non-small cell lung cancer, and other solid tumors, further expanding its potential as a pan-cancer target.</p> <p>Based on its unique expression profile, STEAP1 has become an ideal target for multiple cutting-edge anti-cancer therapies, leading to a rich drug development pipeline. Several innovative therapies have entered clinical stages, including bispecific T-cell engagers, antibody-drug conjugates, and CAR-T therapies that have demonstrated potent anti-tumor activity in preclinical models. In summary, STEAP1 combines precise tumor targeting with broad drug development adaptability, representing not only a novel target for multiple refractory cancers but also a frontier in next-generation targeted therapies.</p>
Storage	Store at 2-8°C short term (1-2 weeks).Store at ≤ -20°C long term. Avoid repeated freeze-thaw.
Formulation	Supplied as a 0.2 µm filtered solution of PBS, pH7.2-7.4.
Endotoxin	< 1 EU/mg, determined by LAL gel clotting assay

Version:3.1

## Data Examples

### Flow Cytometry

Mouse\_STEAP1 CHO-K1 Cell Line (Catalog # GM-C21522) was stained with Anti-STEAP1 hlgG1 Antibody(Xmab-A1) (Catalog # GM-88415AB) or isotype control antibody, followed by anti-Human IgG APC-conjugated Secondary Antibody.

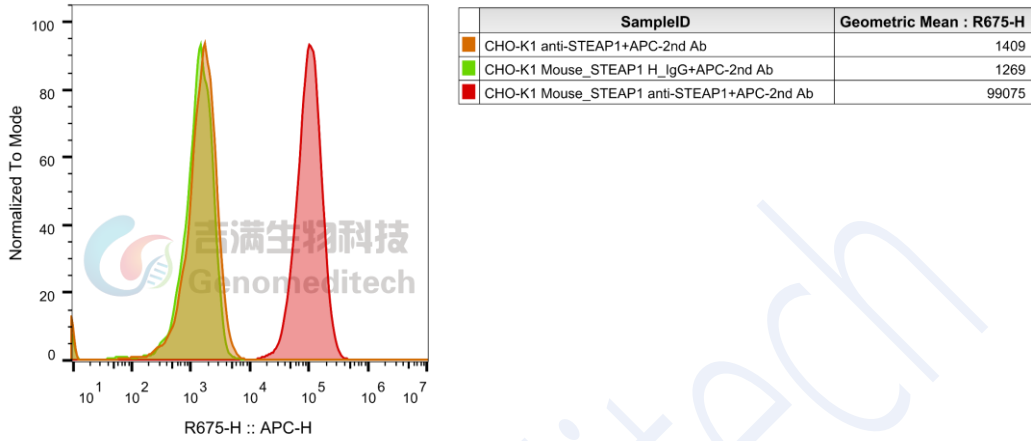


Fig. FACS