

Anti-STAB1 hlgG4 Antibody (Bexmarilimab)

Product information

GM-88546AB-10	10 µg
GM-88546AB-100	100 µg
GM-88546AB-1000	1 mg

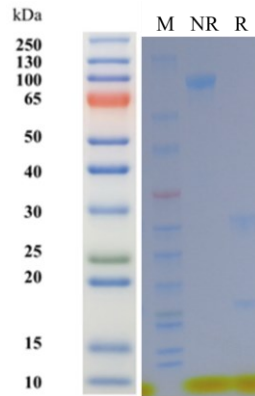
Antibody Information

Species Reactivity	Human
Clone	Bexmarilimab
Source/Isotype	Human IgG4, Kappa
Application	/
Specificity	Detects STAB1
Gene	STAB1
Other Names	CLEVER-1, FEEL-1, FEEL1, FELE-1, FEX1, HRFT, SCARH2, STAB-1
Gene ID	23166 (human)
Background	<p>Bexmarilimab is an investigational immunotherapy, the development of which stems from the in-depth exploration of the mechanisms of immunosuppression in the tumor microenvironment. Tumor-associated macrophage often maintains immunosuppression by expressing Clever-1 receptor (also known as Stabilin-1) to help cancer cells evade immune surveillance. Bexmarilimab acts as a humanized anti-Clever-1 IgG4 antibody that, by blocking this receptor, reprograms macrophages from a tumor-promoting M type 2 to an antitumor M Type 1, activates the immune system and enhances sensitivity to standard treatments. The drug shows potential in hematological neoplasms such as myelodysplastic syndrome (MDS) and acute myeloid leukemia (AML), with a 76% remission rate in high-risk MDS patients and a good safety profile in combination with azacitidine, has been approved by the FDA as an orphan drug.</p>
Storage	Store at 2-8°C short term (1-2 weeks).Store at ≤ -20°C long term. Avoid repeated freeze-thaw.
Formulation	Supplied as a 0.2 µm filtered solution of PBS, pH7.2-7.4.
Endotoxin	< 1 EU/mg, determined by LAL gel clotting assay

Version:3.1

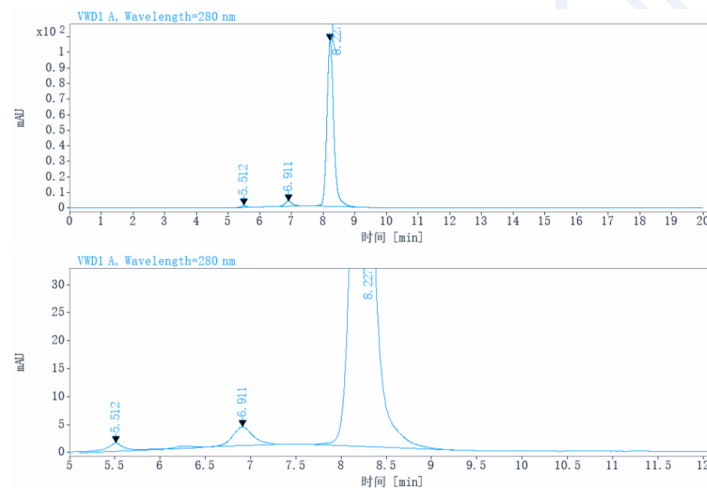
Data Examples

SDS-PAGE



On SDS-PAGE under reducing (R)/non-reducing(N-R) condition. The gel was stained overnight with Coomassie Blue. The purity of the protein is greater than 95%.

SEC-HPLC



The purity of this product is more than 90% verified by SEC-HPLC.