

Anti-CLEC5A hIgG1 Antibody(h5C7)

Product information

GM-88511AB-10	10 µg
GM-88511AB-100	100 µg
GM-88511AB-1000	1 mg

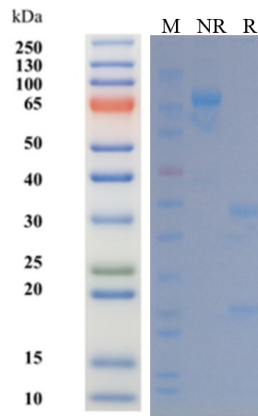
Antibody Information

Species Reactivity	Human
Clone	h5C7
Source/Isotype	Human IgG1, Kappa
Application	/
Specificity	Detects CLEC5A
Gene	CLEC5A
Other Names	CLEC5A, CLECSF5, member A, MDL1
Gene ID	23601 (Human)
Background	<p>The research value of CLEC5A lies in its role as a central "inflammatory hub" and a key pattern recognition receptor on the surface of myeloid immune cells. Upon recognizing viral or bacterial components, CLEC5A over-activates macrophages and neutrophils, driving cytokine storms, acute lung injury, and aberrant NETosis formation, thereby serving as a critical nexus linking pathogen infection to lethal inflammatory cascades. Blocking this pathway not only significantly reduces mortality in severe infections such as dengue, influenza, and sepsis but also improves cognitive function in Alzheimer's disease by quelling neuroinflammation and inhibits bone erosion in autoimmune disorders. Therefore, targeting CLEC5A provides a common upstream therapeutic target for intervening in various refractory inflammatory diseases and holds substantial promise for clinical translation.</p>
Storage	Store at 2-8°C short term (1-2 weeks).Store at ≤ -20°C long term. Avoid repeated freeze-thaw.
Formulation	Supplied as a 0.2 µm filtered solution of PBS, pH7.2-7.4.
Endotoxin	< 1 EU/mg, determined by LAL gel clotting assay

Version:3.1

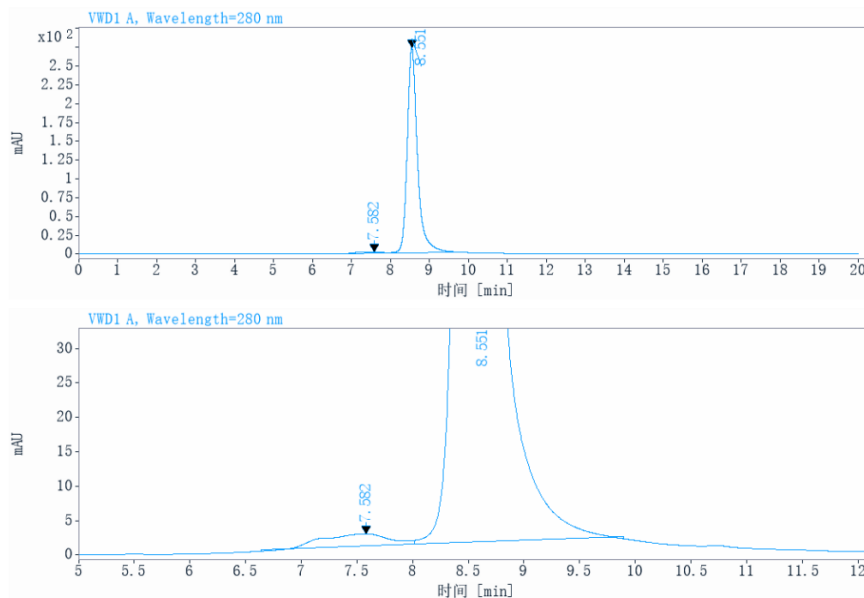
Data Examples

SDS-PAGE



On SDS-PAGE under reducing (R)/non-reducing(N-R) condition. The gel was stained overnight with Coomassie Blue. The purity of the protein is greater than 95%.

SEC-HPLC



The purity of this product is more than 95% verified by SEC-HPLC.