

Anti-CD30L hlgG1 Antibody(Clone2)

Product information

GM-88399AB-10	10 µg
GM-88399AB-100	100 µg
GM-88399AB-1000	1 mg

Antibody Information

Species Reactivity	Cynomolgus
Clone	Clone2
Source/Isotype	Human IgG1(L234A,L235A,G237A), Kappa
Application	Flow Cytometry
Specificity	Detects CD30L
Gene	CD30L
Other Names	CD30-L,CD153,TNFSF8,CD30L,CD30LG,CD153 antigen,CD30 antigen ligand,CD30 Ligand
Gene ID	102143966 (Cynomolgus)
Background	CD30L (CD153, TNFRSF8) , a type II transmembrane glycoprotein of tumor necrosis factor ligand superfamily member 8, is a key signaling axis for the development of tumor necrosis factors by binding to CD30(TNFRSF8) to form a critical signaling axis, which is essential for the development of tumor necrosis factors, it is also the key signaling axis of tumor necrosis factors and plays a central role in immune regulation and tumorigenesis. Its extracellular domain is hydrolysable to produce soluble SCD30L, which is involved in regulating inflammation and the tumor microenvironment. Functionally, CD30L activates NF-kb and MAPK PATHWAYS, promoting T/B cell activation, proliferation, and antibody production, while regulating the Th1/Th2 balance through chemokines (such as mip-1 α) and cytokines (such as IL-5) , which may play an important role in the regulation of T/B cell proliferation and antibody production, may play an important role in regulating T/B cell proliferation and antibody production, affecting immune escape. In Hodgkin's lymphoma, the CD30L signaling axis drives the survival of tumor cells such as Hodgkin's lymphoma (HL) , anaplastic large cell lymphoma (ALCL) , and diffuse large cell lymphoma (DLBCL) . Its high expression is associated with sustained activation of NF-kb, chromosomal instability, and poor prognosis. At the epigenetics level, CD30 promoter region CpG island hypomethylation and the regulation of transcription factors (such as JUNB, STAT3) promote its expression, while the regulation of CD30

Version:3.1

promoter region CpG island hypermethylation promotes its expression, and the regulation of CD30 promoter region CpG island hypermethylation promotes its expression, superenhancers drive high expression of ALCL and adult t-cell leukemia/lymphoma (ATL) .

Storage	Store at 2-8°C short term (1-2 weeks).Store at ≤ -20°C long term. Avoid repeated freeze-thaw.
Formulation	Supplied as a 0.2 μm filtered solution of PBS, pH7.2-7.4.
Endotoxin	< 1 EU/mg, determined by LAL gel clotting assay

Data Examples

Flow Cytometry

Cynomolgus_TNFSF8(CD30L) HEK-293 Cell Line (Catalog # GM-C43849) was stained with Anti-CD30L hIgG1 Antibody(Clone2) (Catalog # GM-88399AB) or isotype control antibody, followed by anti-Human IgG APC-conjugated Secondary Antibody.

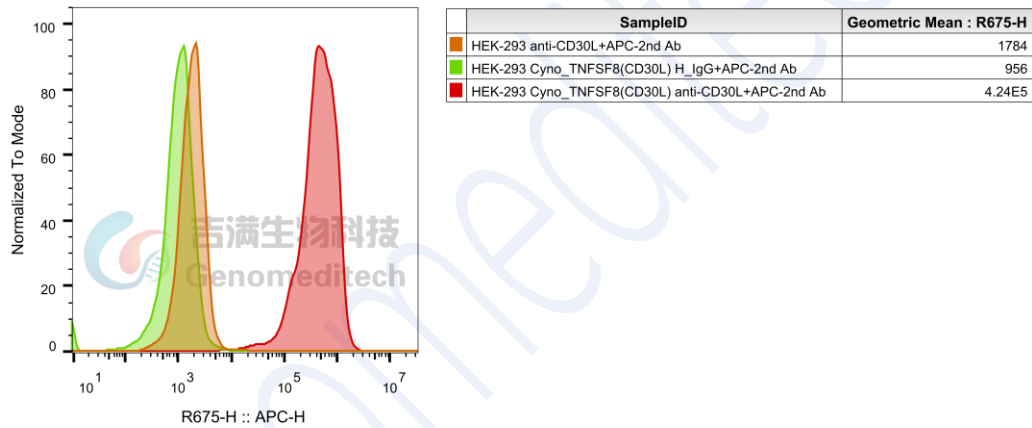


Fig. FACS