

Cynomolgus CD276(B7H3 4Ig) Protein; His Tag

Product Information

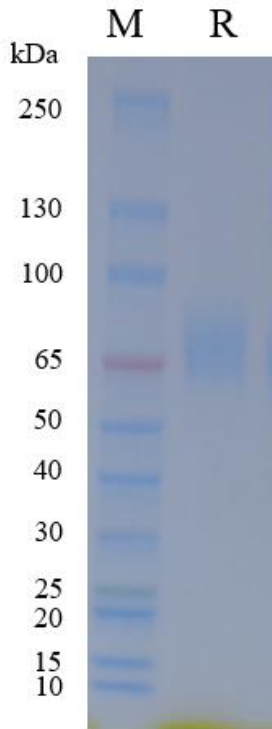
Product Name	Cynomolgus CD276(B7H3 4Ig) Protein; His Tag
Storage temp	Store at $\leq -70^{\circ}\text{C}$, stable for 6 months after receipt. Recommend to aliquot the protein into smaller quantities for optimal storage. Please minimize freeze-thaw cycles.
Catalog# / Size	GM-88536RP-100 / 100 μg GM-88536RP-1000 / 1 mg

Protein Information

Alternative Names	4Ig-B7-H3, B7-H3, PSEC0249, UNQ309, PRO352, B7 homolog 3
Source	Cynomolgus CD276(B7H3 4Ig) Protein; His Tag (GM-88536RP) is expressed from human 293 cells (HEK-293). It contains AA Leu 29 - Glu 465 (Accession # XP_015308534.1). This protein carries a His tag at the C-terminus.
Purity	> 95% as determined by SDS-PAGE
Endotoxin	< 1 EU/ μg , determined by LAL gel clotting assay
Predicted Mol Mass	47.9 KDa
Formulation	Supplied as a 0.2 μm filtered solution of PBS, pH7.2-7.4.
Description	<p>B7H3, also known as CD276, is a protein belonging to the B7 family of immune regulatory molecules. It is a transmembrane protein that plays a significant role in immune regulation and tumor immunotherapy. B7H3 can exist in different structural forms, with variations such as 4IG (containing 4 immunoglobulin domains) and 2IG (containing 2 immunoglobulin domains).</p> <p>This protein is known to be highly expressed in various tumors and is closely associated with tumor development, progression, and prognosis. In the context of tumor immunotherapy, B7H3 serves as an important target due to its ability to modulate T cell responses. Inhibiting B7H3 protein can enhance the killing capacity of T cells against tumor cells, thereby improving the effectiveness of cancer treatment.</p> <p>Overall, B7H3 plays a crucial role in immune regulation, immune response modulation, and tumor immune evasion. Understanding the mechanisms involving B7H3 protein can provide valuable insights into immunotherapy strategies and tumor development.</p>

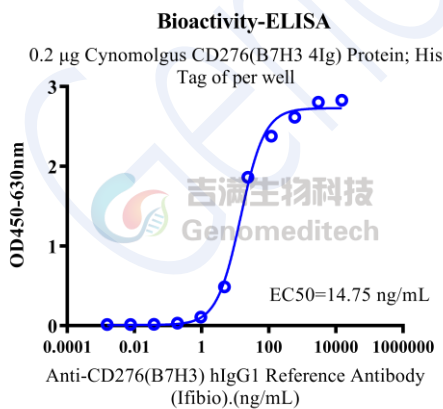
Version:4.0

SDS-PAGE

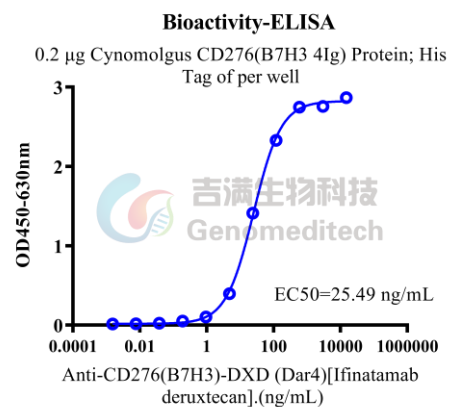


On SDS-PAGE under reducing (R) condition. The gel was stained overnight with Coomassie Blue. The purity of the protein is greater than 95%.

Bioactivity-ELISA



Cynomolgus CD276(B7H3 4Ig) Protein; His Tag (Catalog # GM-88536RP) was immobilized at 2 µg/ml (100 µL/well). Increasing concentrations of Anti-CD276(B7H3) hIgG1 Reference Antibody (Ifibio) (Catalog # GM-87345MAB) were added.



Cynomolgus CD276(B7H3 4Ig) Protein; His Tag (Catalog # GM-88536RP) was immobilized at 2 µg/ml (100 µL/well). Increasing concentrations of Anti-CD276(B7H3)-DXD (Dar4)[Ifinatamab deruxtecan] (Catalog # 87823AB) were added.

Version:4.0