

# Anti-LRRC15 hlgG1 Antibody (samrotamab)

## Product information

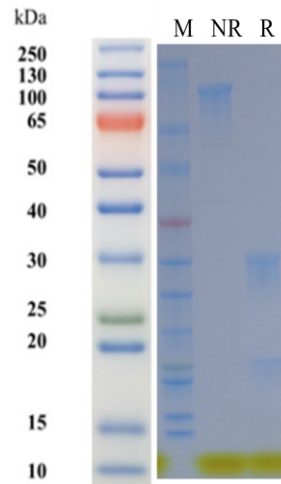
GM-88586AB-10	10 µg
GM-88586AB-100	100 µg
GM-88586AB-1000	1 mg

## Antibody Information

Species Reactivity	Human
Clone	samrotamab
Source/Isotype	Human IgG1(KEEM), Kappa
Application	/
Specificity	Detects LRRC15
Gene	LRRC15
Other Names	LIB
Gene ID	131578 (human)
Background	Samrotamab is a humanized IgG1-κ chimeric antibody that targets LRRC15, and its research background is closely linked to innovative explorations in the field of oncology therapy. LRRC15 is a type I transmembrane protein involved in cell-to-cell and cell-to-matrix interactions, and it has been shown to be involved in a variety of cellular processes, it is highly expressed on the surface of a variety of solid tumors (such as breast cancer, lung cancer, ovarian cancer) and tumor-associated fibroblasts (CAFS) , but rarely expressed in normal cells. This“Tumor specificity” makes LRRC15 a promising new anti-cancer target.
Storage	Store at 2-8°C short term (1-2 weeks).Store at ≤ -20°C long term. Avoid repeated freeze-thaw.
Formulation	Supplied as a 0.2 µm filtered solution of PBS, pH7.2-7.4.
Endotoxin	< 1 EU/mg, determined by LAL gel clotting assay

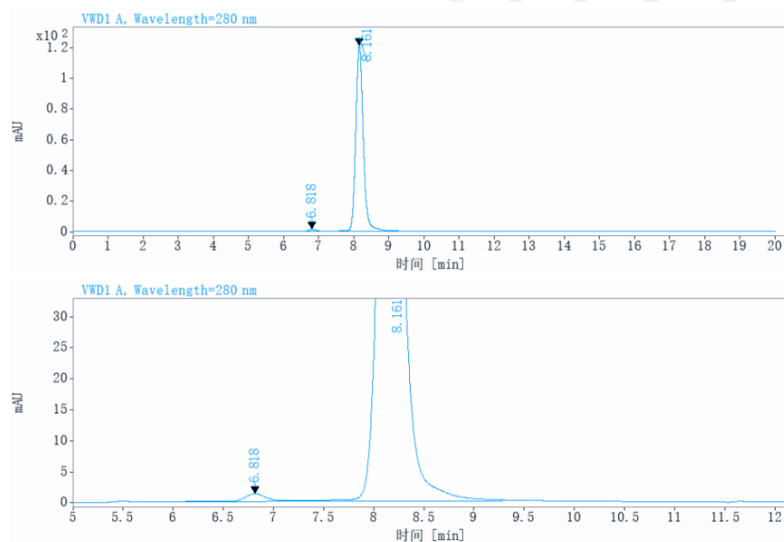
## Data Examples

### SDS-PAGE



On SDS-PAGE under reducing (R)/non-reducing(N-R) condition. The gel was stained overnight with Coomassie Blue. The purity of the protein is greater than 95%.

### SEC-HPLC



The purity of this product is more than 90% verified by SEC-HPLC.