

Anti-WISP1 hIgG1 Antibody(WIr2D6)

Product information

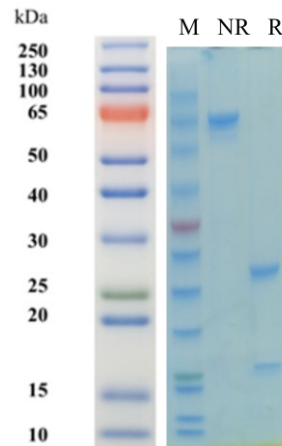
GM-87933AB-10	10 µg
GM-87933AB-100	100 µg
GM-87933AB-1000	1 mg

Antibody Information

Species Reactivity	Human
Clone	WIr2D6
Source/Isotype	Human IgG1, Kappa
Application	/
Specificity	Detects WISP1
Gene	WISP1
Other Names	CCN4, WISP1-OT1, WISP1-UT1, WISP1c, WISP1i, WISP1tc
Gene ID	8840 (Human)
Background	<p>The protein encoded by the WISP1 gene belongs to the CCN family of secreted glycoproteins and is localized to the human genome 8q24.1-8q24.3, consisting of 367 amino acids, and the WISP1 gene is located on the human chromosome 8q24.3, it contains insulin-like growth factor binding domain, protein complex formation domain and other structures. This gene regulates cell proliferation, migration and metabolic processes through the Wnt signaling pathway, it plays a dual role in tissue repair, tumor progression, and organ fibrosis. It can promote fibroblast activation and accelerate wound healing, it may also induce inflammation, lipogenesis and insulin resistance by activating JNK/PI3K and other pathways. Its expression level is closely related to diabetes, tumor malignancy and fibrotic disease progression.</p>
Storage	Store at 2-8°C short term (1-2 weeks).Store at ≤ -20°C long term. Avoid repeated freeze-thaw.
Formulation	Supplied as a 0.2 µm filtered solution of PBS, pH7.2-7.4.
Endotoxin	< 1 EU/mg, determined by LAL gel clotting assay

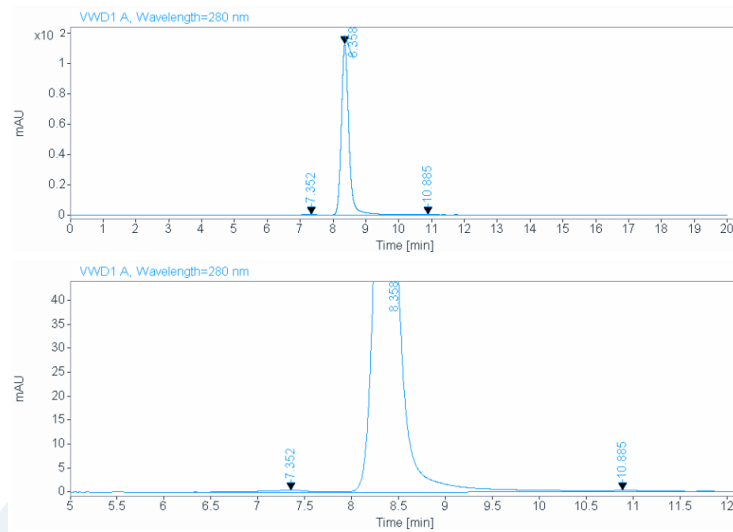
Data Examples

SDS-PAGE



On SDS-PAGE under reducing (R)/non-reducing(N-R) condition. The gel was stained overnight with Coomassie Blue. The purity of the protein is greater than 95%.

SEC-HPLC



The purity of this product is more than 90% verified by SEC-HPLC.