

Anti-CLEC5A×HER2 hIgG1 Bispecific Antibody(HER2/5C7)

Product information

GM-88513AB-10	10 µg
GM-88513AB-100	100 µg
GM-88513AB-1000	1 mg

Antibody Information

Species Reactivity	Human
Clone	HER2/5C7
Source/Isotype	Human IgG1(hole/knob), Kappa
Application	Flow Cytometry; Activation assay
Specificity	Detects CLEC5A、HER2
Gene	CLEC5A&HER2
Other Names	CLEC5A: CLECSF5, MDL-1, MDL1 HER2: CD340, HER-2, HER-2/neu, MLN 19, MLN-19, NEU, NGL, TKR1, VSCN2, c-ERB-2, c-ERB2, p185(erbB2)
Gene ID	CLEC5A: 23601 (human) HER2: 2064 (human)
Background	CLEC5A, a member of the C-type lectin family, acts as a macrophage surface receptor and participates in the immune response by triggering pro-inflammatory signals in viral infections such as dengue fever, and it has been implicated in the pathogenesis of dengue fever, it is also closely related to inflammatory diseases such as sepsis and systemic lupus erythematosus, and is an important tumor treatment target. CLEC5A × HER2 biantibody can not only block HER2-mediated tumor signaling pathway, but also regulate CLEC5A-related inflammatory response by simultaneously binding CLEC5A and HER2 targets, enhancing anti-tumor activity while reducing immune-related side effects provides a novel therapeutic strategy for HER2-positive tumors and CLEC5A-overexpressing inflammatory diseases.
Storage	Store at 2-8°C short term (1-2 weeks).Store at ≤ -20°C long term. Avoid repeated freeze-thaw.
Formulation	Supplied as a 0.2 µm filtered solution of PBS, pH7.2-7.4.
Endotoxin	< 1 EU/mg, determined by LAL gel clotting assay

Version:3.1

Data Examples

Flow Cytometry

H_CLEC5A Reporter Jurkat Cell Line (Catalog # GM-C28338) was stained with Anti-CLEC5A×HER2 hlgG1 Bispecific Antibody(HER2/5C7) (Catalog # GM-88513AB) or isotype control antibody, followed by anti-Human IgG APC-conjugated Secondary Antibody.

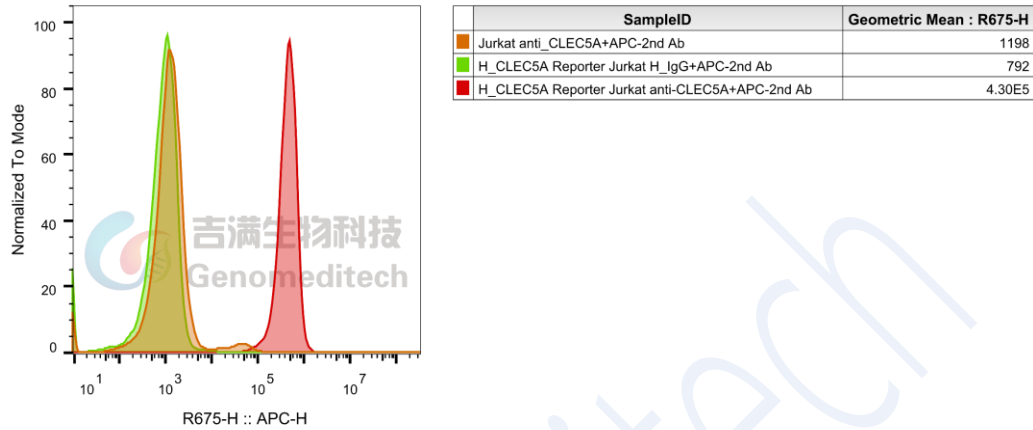


Fig. FACS

Activation assay

Anti-CLEC5A×HER2 hlgG1 Bispecific Antibody(HER2/5C7) (Catalog # GM-88513AB) stimulated Luminescence of H_CLEC5A Reporter Jurkat Cell Line (Catalog # GM-C25939) binded with H_HER2(ERBB2) CHO-K1 Cell Line (Catalog # GM-C18996). EC50 for this effect is 0.01416 $\mu\text{g/mL}$.

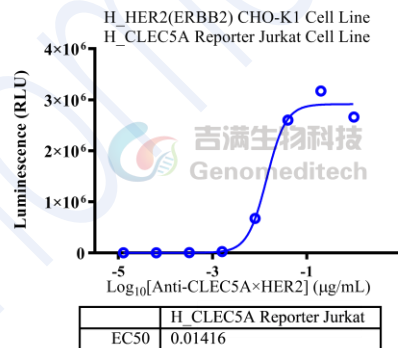


Fig. assay