

Anti-CXCR5 hIgG1 Antibody(h11G2)

Product information

GM-88548AB-10	10 µg
GM-88548AB-100	100 µg
GM-88548AB-1000	1 mg

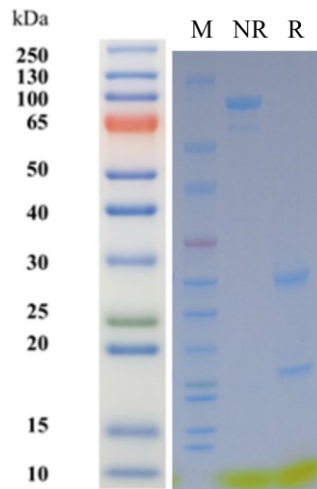
Antibody Information

Species Reactivity	Human
Clone	h11G2
Source/Isotype	Human IgG1, Kappa
Application	/
Specificity	Detects CXCR5
Gene	CXCR5
Other Names	BLR1, CD185, MDR15
Gene ID	643 (human)
Background	<p>CXCR5 is a member of the CXC chemokine receptor family, which belongs to the G protein-coupled receptor and has a seven-time transmembrane domain. It specifically binds to the chemokine CXCL13, mediates directional migration of B lymphocytes and follicular helper T cells to secondary lymphoid organs, and participates in lymph node development and lymphocyte homing. CXCR5 plays a key role in the construction of immune microenvironment, and its abnormal expression is closely related to autoimmune diseases such as systemic lupus erythematosus and rheumatoid arthritis, as well as tumor metastasis such as breast cancer and prostate cancer. In recent years, CXCR5 has also made breakthroughs in the fields of pain regulation and sepsis treatment, and has become a new target for immunotherapy and precision medicine.</p>
Storage	Store at 2-8°C short term (1-2 weeks).Store at ≤ -20°C long term. Avoid repeated freeze-thaw.
Formulation	Supplied as a 0.2 µm filtered solution of 200 mM NaCl in PBS, pH 7.2–7.4.
Endotoxin	< 1 EU/mg, determined by LAL gel clotting assay

Version:3.1

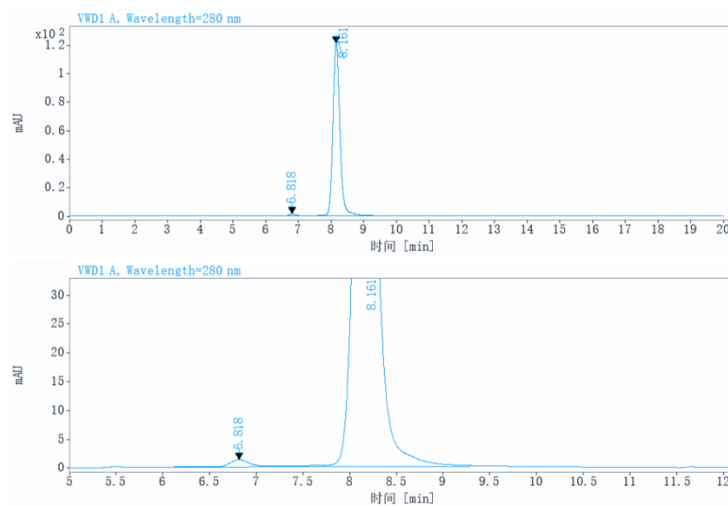
Data Examples

SDS-PAGE



On SDS-PAGE under reducing (R)/non-reducing(N-R) condition. The gel was stained overnight with Coomassie Blue. The purity of the protein is greater than 95%.

SEC-HPLC



The purity of this product is more than 90% verified by SEC-HPLC.