

Anti-IL2 hlgG1 Antibody (imneskibart)

Product information

GM-88653AB-10	10 µg
GM-88653AB-100	100 µg
GM-88653AB-1000	1 mg

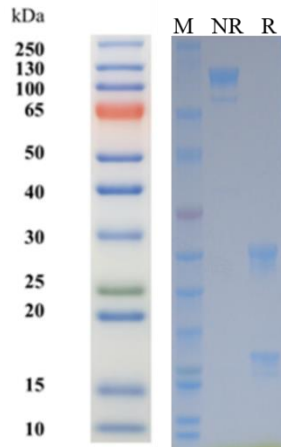
Antibody Information

Species Reactivity	Human
Clone	imneskibart
Source/Isotype	Human IgG1 (L234A, L235A), Kappa
Application	/
Target	Detects IL2
Gene	IL2
Other Names	IL-2; TCGF; lymphokine
Gene ID	3558 (Human)
Background	<p>IL2 is a master regulator of immune homeostasis, paradoxically driving both the expansion of effector T cells and the maintenance of immunosuppressive regulatory T cells (Tregs). Anti-IL2 monoclonal antibodies offer a precision tool to bias this signaling axis. In autoimmune diseases, Anti-IL2 strategies (particularly JES6-1-like clones or non-Fc-receptor-binding mutants) are being explored to selectively block IL2's engagement with high-affinity receptors on endothelium and NK cells, thereby shunting bioavailability toward Treg expansion for therapeutic tolerance.</p> <p>Conversely, in oncology, Anti-IL2 antibodies can be used to neutralize Treg-biased endogenous IL2 or, when complexed with IL2, form immunocytokines that preferentially stimulate cytotoxic CD8+ T cells over Tregs, enhancing anti-tumor immunity while mitigating vascular leak syndrome. Thus, Anti-IL2 research is pivotal for developing next-generation immunotherapies with tunable specificity.</p>
Storage	Store at 2-8°C short term (1-2 weeks). Store at ≤ -20°C long term. Avoid repeated freeze-thaw.
Formulation	Supplied as a 0.2 µm filtered solution of PBS, pH7.2-7.4.
Endotoxin	< 1 EU/mg, determined by LAL gel clotting assay

Version:3.1

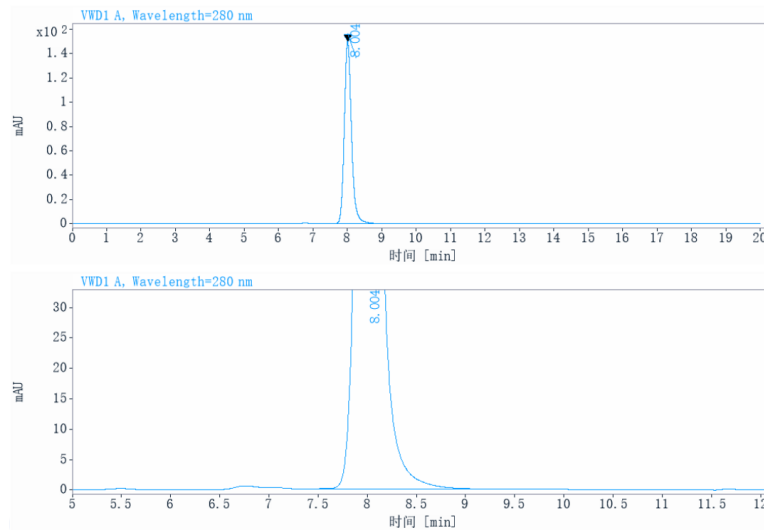
Data Examples

SDS-PAGE



On SDS-PAGE under reducing (R)/non-reducing(N-R) condition. The gel was stained overnight with Coomassie Blue. The purity of the protein is greater than 90%.

SEC-HPLC



The purity of this product is more than 90% verified by SEC-HPLC.